

NEWSLETTER

LFS26 ISSUE TWO • APRIL 2026



OVER HALFWAY NOW

BY EUAN DEIGHTON
LFS26 TEAM LEADER

Welcome to LUMotorsport's second newsletter of the 2026 Formula Student season. The team have a lot to be excited about in the coming months; the major design phase of LFS26 has been finalised and we have begun manufacturing this years competitor.

Major milestones have been accomplished to date with all major technical documents submitted for this years competitions. 2026 will see another first for LUMotorsport as the team has secured an entry into FS France for the first time. This decision will see LUMotorsport push it's learning to the max as we attempt to design to the Europe and UK technical rule books.

In a year where learning is at the forefront of operations across all departments, we have utilised our time to learn from LFS25 with some dynamic testing. Providing an opportunity to iron out any electrical issues to ensure LFS26 is ready to race.

We look forward to sharing the teams journey over the coming months as we push to be ready for the 2026 competitors. As always, thank you to all the sponsors and supporters of this project, it would not be possible with your generous contributions.



Car electrical checks prior to taking to the track (left)



ROAD TO FS FRANCE STARTS NOW!

After a successful round of European Quizzes, the LFS26 team will be heading to Lyon to compete in FS France! This will be the team's first return to a European competition since 2023 (Czech, pictured above). LUM are looking forwards to being able to compete against the best teams Europe has to offer on an international stage once again.

FSUK NO. 43
FSF NO. 05

TABLE OF CONTENTS

Introduction • P. 1

Team Build Update • P. 2

LFS26 Progress • P. 3-4

Legacy and Impact • P. 5

General Updates • P. 6

TEAM BUILD UPDATE

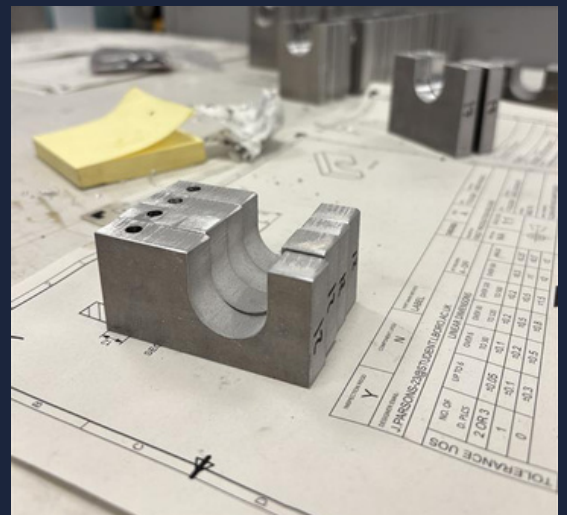
Our main goal for LFS26 has been centered around improving knowledge within the team, and exposing new team members to all processes within the team. Over the past 3 months, our leads have been introducing new team members to designs, systems, and processes. This includes training 12 students on metallic manufacture processes, greatly increasing our in-house manufacture capabilities. Alongside this, our Aerodynamics team members have been working with MCT to manufacture the composite components needed for the car, including the nosecone and aero package.



COMPOSITES

Thanks to the continued support of MCT, over the past 3 weeks we've been able to manufacture our first nosecone, as well as begin manufacture of the aerodynamics package, which this year includes an updated front wing and sidepods.

We've been taught the manufacture and bagging process, which has allowed us to return to campus to continue our layups in-house.



METALLICS

Over the past few months, we've been working on our jiggging manufacture, getting multiple team members involved in milling components. Using material provided by Broder, we've completed the manufacture of tube holders and uprights. The LFS26 chassis shape is starting to take shape on the jiggging bed!



Our chassis tubes arrived just before Easter, and we're on track to have a rolling chassis by the end of April. This is the majority of team member's first time designing and building a space-frame chassis from scratch, so its exciting to see the team making progress over the Easter break. We're excited to head to 316 Process Fabrications to weld our chassis over the coming weeks, and seeing our design come to life.

Key Aims:

- Continuous Improvement
- Team Member Training/ Knowledge transfer
- Increasing manufacture capabilities

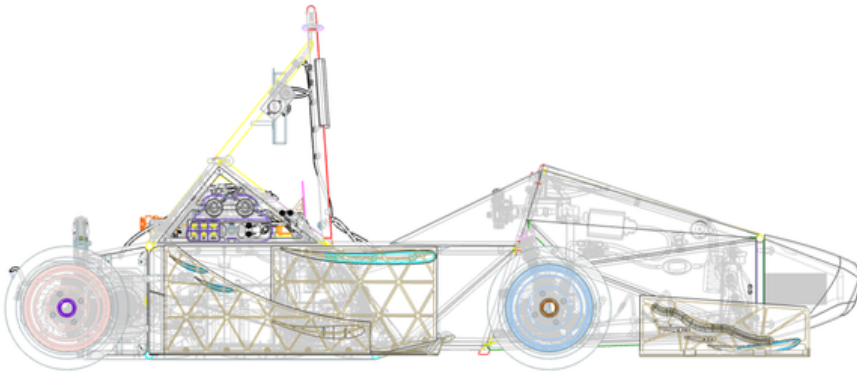
WITH THANKS TO OUR SPONSORS



LFS26 PROGRESS

CAR DESIGN

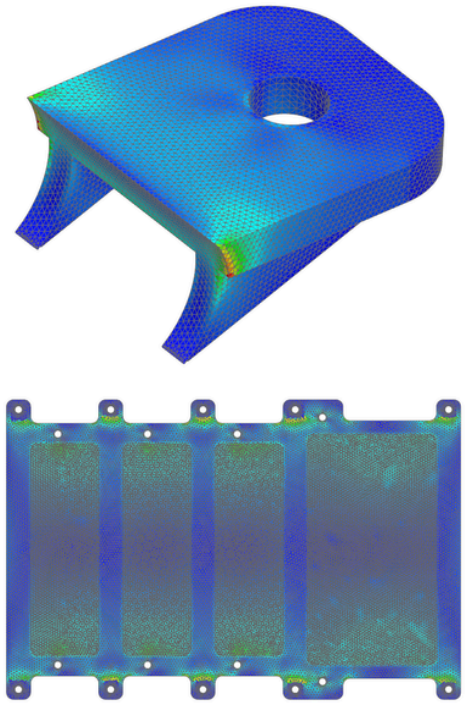
The design team have shifted focus towards vehicle packaging, manufacturability, and servicability at competition. A key aspect of this has been developing a drop-out floor, to improve our process for integrating the Accumulator into the car.



Additionally, we've now completed SES for both FSUK and FS France. This is a document required into compete in Formula Student events, in which teams must prove the structural performance and legality of key car structures, such as the chassis and battery casing. Having reached the halfway point of LFS26, the team is switching focus to car manufacture, with all hands on deck to produce a rolling chassis!

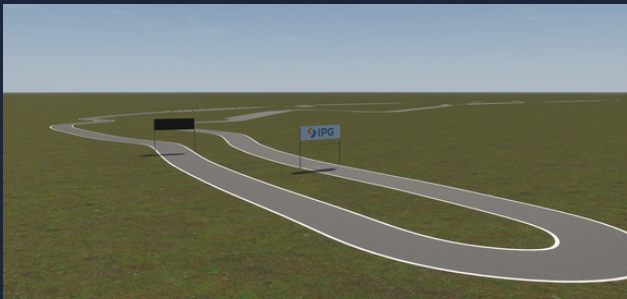
Key Updates:

- Floor redevelopment
- SES completed
- Shifting to build focus



Key Updates:

- LTS in progress
- Finding car improvements
- Finalised aerodynamics package
- New suspension dampers ordered



PERFORMANCE & SUSPENSION

Our performance team has been making good progress with the FSUK Lap Time Simulation Competition, with the iterative process for determine our parameters well underway. Alongside this, the Simulation team has been working on optimising our car performance, and getting to know our new Marple data insights platform.

The Aerodynamics team have completed their CFD analysis of our new aero package, and have finalised the components that are going on the car this year.

Our new Multimatic suspension dampers are currently on order, and the suspension team are excited to see them on the car. Wishbone manufacture is also well underway, with welding taking place over the next few weeks!



LFS26 PROGRESS

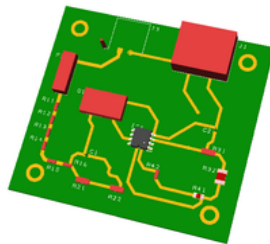
POWERTRAINS & ELECTRONICS

The Electronics team have been busy working on performance & design improvements of our key systems. The new PCB order has just been sent for manufacture, with the aim to test our competition setup over the following weeks. We've also redesigned one of the accumulator PCBs, which will help us extract the maximum performance from the car.

The brake light has been redesigned, with packaging optimised to fit with our new systems. We've also begun the process of adapting some of our hardware designs in preparation for France later in the year. Our HVDU team is also making good progress on their component design. ESF has also been completed, which details our full competition electrical system for both FSUK and FSF.

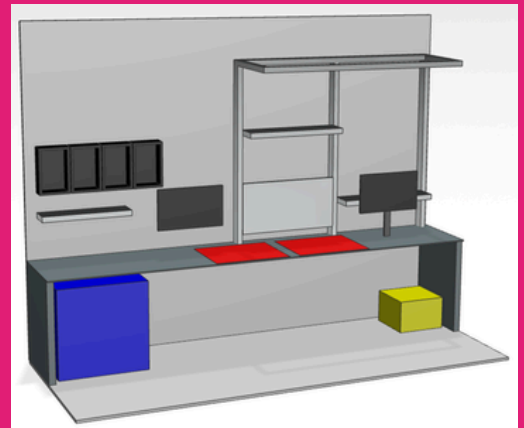
Key Updates:

- New PCBs sent for printing
- Brake light redesign & new looms
- HVDU progress underway



IMechE Financial Award:

Following a detailed application process and interview, LUM have been awarded £4000 by IMechE, as a part of their financial award scheme. As a team, we'll be putting this money towards redeveloping our Electronics Workspace, doubling our current setup. We'll also be offering Level 3 & 4 HV training to interested team members, to improve knowledge of our systems and safety standards.



Key Updates:

- Business and Cost in progress
- New sponsors welcomed to the team
- Growing our social media presence



STATICS

Both our Business and Cost entries are well underway, with the first drafts of both the business plan presentation and cost explanation file nearly complete! This year, we've made it a real focus to highlight the importance of the static events and grow our statics team, as this fits with our overall improvement goals. We've historically been strong in the static elements of FSUK, and we'd like to solidify this for years to come.

Alongside this, the team have welcomed several new sponsors to the team, and we're incredibly grateful for the support they have been providing. Our TengTools order arrived a few weeks ago, and we've been putting the tools to good use! We've also been selected as a recipient of the RS Pro award, which has been a great help to the team.

Finally, we've been working on growing the team's social media presence, and have introduced video content to our Instagram this year.

LEGACY AND IMPACT: IWD CELEBRATIONS

Each newsletter, we're highlighting how we're aiming to align with Motorsport UK's strategy for supporting diverse and inclusive motorsport. The focus of this issue is on Legacy and Impact, and how LUM is creating wider change, using our reach and our influence to encourage more underrepresented groups into motorsport and STEM roles.



For International Women's Day this year, we ran a spotlight on 4 current and 2 former team members, highlighting how being a part of the team has helped them to progress their motorsport career. It was lovely to hear our Alumni stories, and seeing what they've gone on to do once graduating was really inspirational for our current team members. We've seen an uptake in female team members over the past few years, and we're keen on highlighting to prospective members that there is a space for everyone on the team.

We were also lucky enough to be invited to 'Driven By her,' an event run by WMG and Warwick Racing Formula Student Team. Ella, Georgie, and Grace had a great time meeting some of the other women in Formula Student, and hearing from industry speakers about their experiences in motorsport.

GENERAL UPDATES

LAB & TOOL UPGRADES

Bott have provided us with a new race bay, which has been installed in our workshop. This has been incredibly beneficial to the team, and we've been utilising the new storage systems provided. As well as this, the new workbenches have been incredibly beneficial to the team over the past few months!



As well as the workspace upgrades, we've also upgraded our tool selection, with TengTools joining the team for LFS26! These improvements to our workspace have come just in time for build season.



GETTING COMPETITION READY



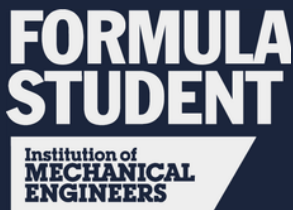
We've begun working on the remainder of the documentation that we need for both FSUK and FS France. With SES and ESF completed, we've moved on to working on the Engineering Design Report, and spec sheet. Team selection is also in progress, as we aim to take both new and experienced members to competition

MASCOT UPDATE!

We recently had a new addition to the team- our mascot 'Tenguin'! He's had a great time exploring the lab, and seeing the day to day operations of the team.



LFS26 SPONSORS



CHECK OUT MORE ON

LUMOTORSPORT.COM/SPONSORS



**FOLLOW OUR SOCIALS
FOR FURTHER UPDATES**



LUMOTORSPORT



LUMOTORSPORT



WWW.LUMOTORSPORT.COM